



Application: CAD/CAM Router Retrofit

BACKGROUND

Sign Builders Incorporated is a large manufacturer and wholesaler of store front and road side sign products. SBI uses a multitude of routing and pre-forming machines to process raw product such as aluminum, plastic, foam and wood into attractive signage.

The product design to finished goods time at SBI is streamlined, using Logixx and FlexiExpert™ software for product design, and CNC controls at their routers and pre-formers. Unfortunately, technical and service support for many of the routers and pre-formers was discontinued in the late 1990's leaving SBI with many good pieces of equipment with obsolete controls and no current or future support.

RETROFIT OBJECTIVES

- Utilize existing investment in product design software
- Employ current and future control technology
- Control a wide variety of machine and motor axis setups
- Incorporate typical router setup procedures
- Keep cost low

HARDWARE AND SOFTWARE SOLUTION

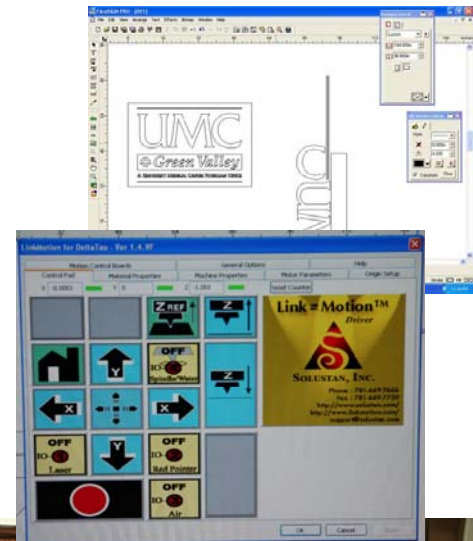
The control system solution addresses each of the retrofit objectives, packaging several key components into a simple working system.

The Retrofit Control Package Includes:

- Delta Tau Advantage 900 PC & Control Console,
- Solustan LinkMotion™ CAD/CAM software
- Delta Tau PMAC2A/PC104 4 Axis Motion Control
- Delta Tau PMAC2A/PC104 ACC 2P Opt1A & 3
- Delta Tau ACC34AA Discrete I/O
- RSI Setup & Configuration Software

Original Equipment Components Used

- Machine Frame & Linear Guides
- (4) Existing Stepper Motors & Drives
- (1) High Speed Routing Spindle
- (1) Table Vacuum
- (1) Mister



RESULTS

"It's worked out very well at a very reasonable price. We have more control than we've ever had on the machine", reports Bob Cairnes at Sign Builders.

FEATURES

- PMAC control of stepper-servo & other motors
- State of the art connectivity USB2.0/Ethernet
- LinkMotion™ driver is compatible with most popular graphics design software
- PC Based & Configured HMI
- Router Setup Features

RSI Technology is a Distributor and Systems Integrator for Delta Tau Data Systems. Please contact us for more information on this application.



*FlexiExpert is a registered trademark of Scanvec Amiable, Inc.